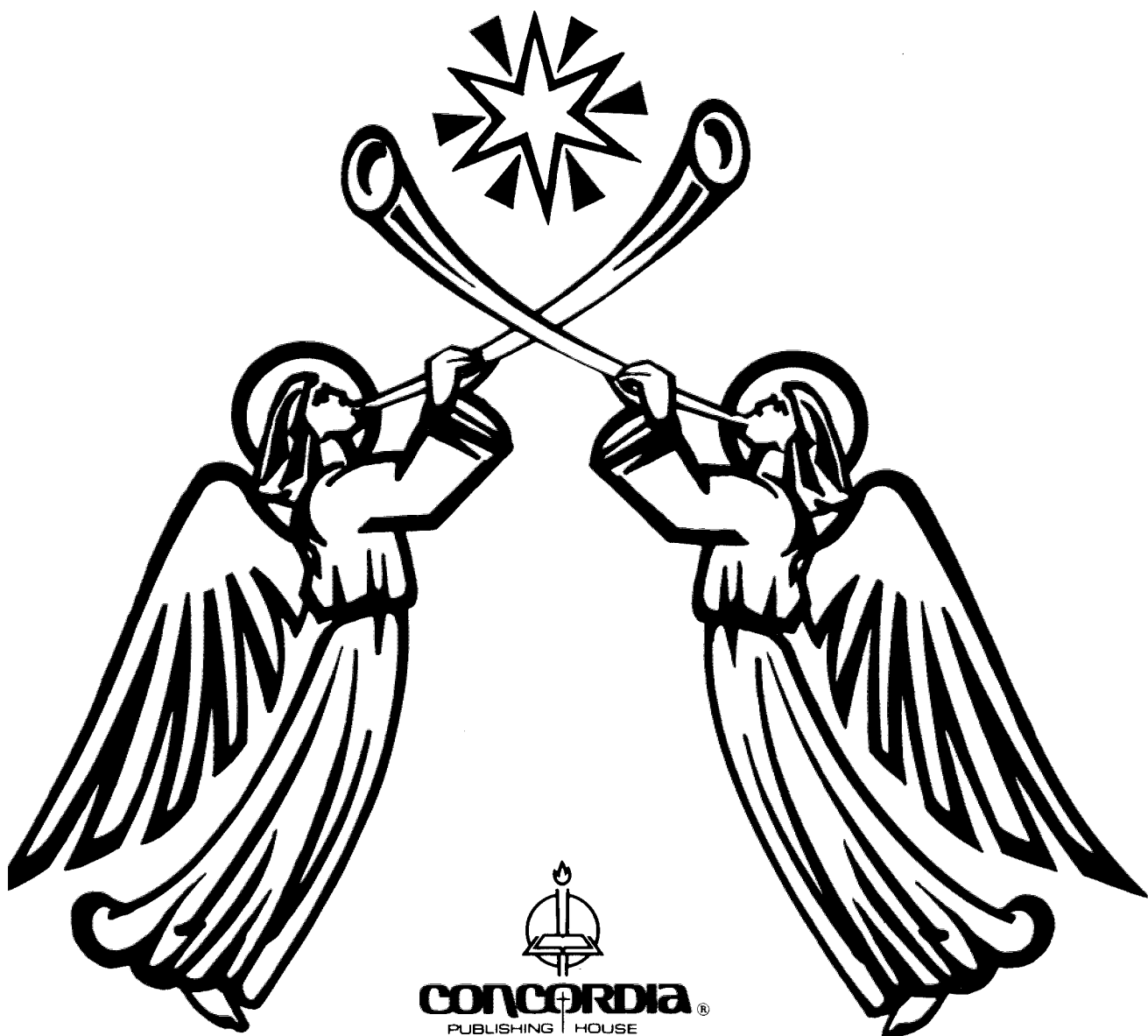


*CHRISTMAS
EVE
PROCESSIONAL*



CONCORDIA®

PUBLISHING HOUSE

3558 SOUTH JEFFERSON AVENUE

ST. LOUIS, MISSOURI 63103

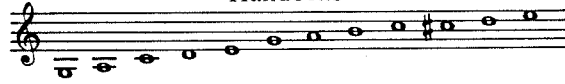
Christmas Eve Processional

(Unison)

THEODORE BECK

T.B. 1969

Handbells



Recorder *♩. = about 52*

Bells *

Guitar *

Organ

*The addition of the Handbells is not necessary. The Guitar could be used alone, in place of the organ, or could be omitted.

Duplication of this material in any form is prohibited without the written consent of the publisher

Copyright © 1973 by Concordia Publishing House, St. Louis, Mo.
All Rights Reserved Printed in U.S.A.

Voices

1 Come, you chil-dren, hear the song Shep-herds heard the an-gels sing-ing;
 2 Come, you chil-dren, come and sing, Sing to Je-sus here be-fore us;
 3 Thanks to God for His great love, Thank Him for His bless-ings end-less;

Bells

Finger cymbal
(triangle)

Come to Beth-l'em, come a-long To the man-ger, prais-es bring-ing,
 Come to Christ, our on-ly King, See the in-fant Je-sus glo-ri-ous,
 Praise to God, who reigns a-bove, Praise Him for His grac-es bound-less;

Christ the Lord is born to save us, Sent from God, this Gift He
 Join with oth-ers at the man-ger, Wor-ship Him, He is no
 Let us for this Sav-ior la-bor, Tell the sto-ry to our

gave us.
 strang-er. Come to Beth-l'em, come and see God's great love to me.
 neigh-bor.

Interlude between 1+2 — Organ

The first system of the organ interlude consists of two staves. The treble staff contains a sequence of eighth notes: G4, A4, B4, C5, D5, E5, F5, G5. The bass staff contains a sequence of chords: G2-B2-E3, G2-B2-E3, G2-B2-E3, G2-B2-E3, G2-B2-E3, G2-B2-E3, G2-B2-E3, G2-B2-E3.

The second system of the organ interlude consists of two staves. The treble staff contains a sequence of notes: G4, A4, B4, C5, D5, E5, F5, G5. The bass staff contains a sequence of chords: G2-B2-E3, G2-B2-E3, G2-B2-E3, G2-B2-E3, G2-B2-E3, G2-B2-E3, G2-B2-E3, G2-B2-E3. The system concludes with the text "To 2".

(Optional)
Interlude between 2+3 — Recorders

Fast

The recorder interlude consists of six staves of music. The first staff begins with a treble clef and a key signature of one flat (Bb). The music is written in a rhythmic pattern of eighth notes and rests. The second staff continues the melody with various intervals and rests. The third staff features a change in key signature to two flats (Bb, Eb). The fourth staff continues the melody with eighth notes and rests. The fifth staff continues the melody with eighth notes and rests. The sixth staff concludes the interlude with a series of chords and a *rit.* marking.

rit. To 3